

Lake Informational Sheet

Lake Roberts



Lake Location Data^{1,4}

Latitude: 28° 31' 4" N **Longitude:** 81° 34' 17" W
Northing: 1,521,462 **Easting:** 472,631
STR: 01-23-27
Major Drainage Basin: Lake Apopka Drainage Basin
Water Management District: SFWMD
Commissioner District: 1
Maintenance District: West Orange

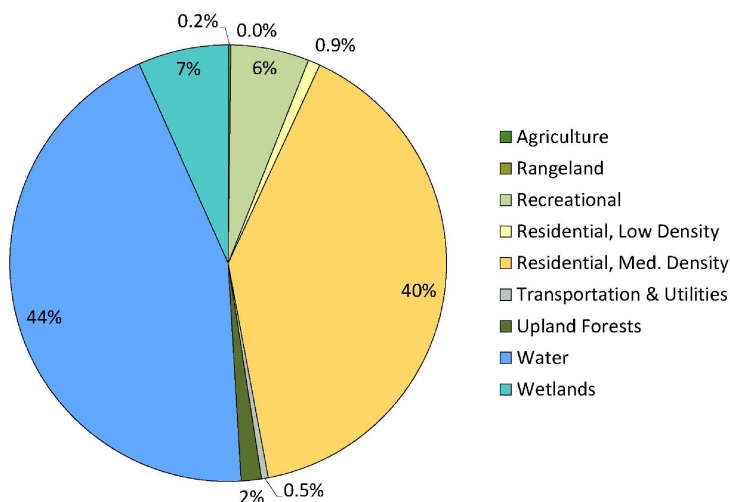
General Information^{2,3,5,6,7}

Contributing Area (ac): 267.6
NHWE (ft NAVD): 108.06 **Surface Area @NHWE (ac):** N/A
Datum Conversion (ft): -0.940
Datum Conversion Source: Orange County Surveyed Benchmark: L1472055
Receiving Water Body: Unnamed Wetland
NHWE Report Available: Yes
Flowpath: Lake flows through culverts into unnamed wetland to the west

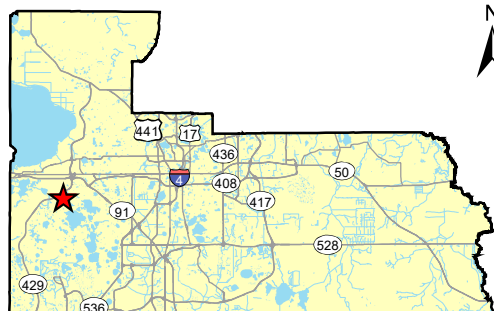
Correlation of Associated Data IDs^{8,9,10}

Lake Index ID: 414
EPD Lake ID: A33
Major Basin Model Node: JROBERTS
Alias: N/A

Landuse Distribution Within Contributing Area^{5,11}



Orange County



Location Map



Contributing Area^{5,17}



Lake Roberts

Lake Informational Sheet

Lake Roberts



FEMA Information ^{2,12, 14}

1% Chance Flood El. (ft NAVD): 110.59
1% Chance Flood El. Source: County Established - No Date
FEMA Flood Zone: A
FEMA Datum Conversion (ft): -0.91
FEMA FIRM Effective Date: 9/24/2021
FEMA FIRM Panel: 12095C0215H

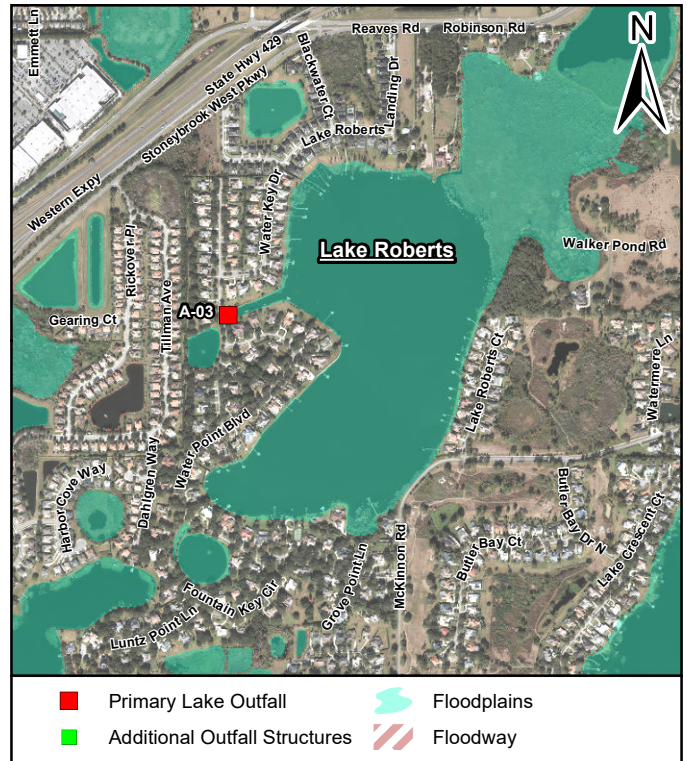
Primary Outfall Data ^{15,16}

Outfall Type: Culvert
Public Works (PW) ID: A-03
EPD ID: A-03
Orlando ID: N/A
Landlocked: No
Outfall Control El. (ft NAVD): 107.26
Major Basin Model Link: JR29
Source: Johns Lake Drainage Study

Additional Outfall Structures ¹⁵

Type	PW ID	Control Elev (ft)

Outfall & Floodplain Map ^{13,17}



Primary Outfall Structure



Lake Photograph



Lake Roberts

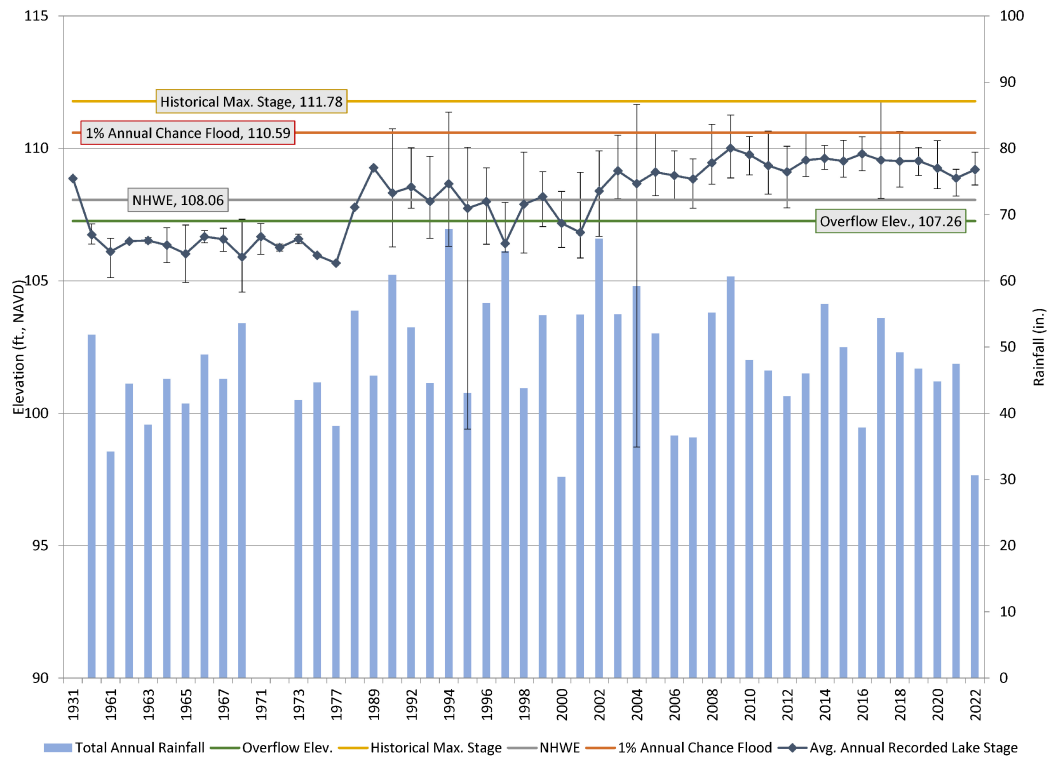


Lake Informational Sheet

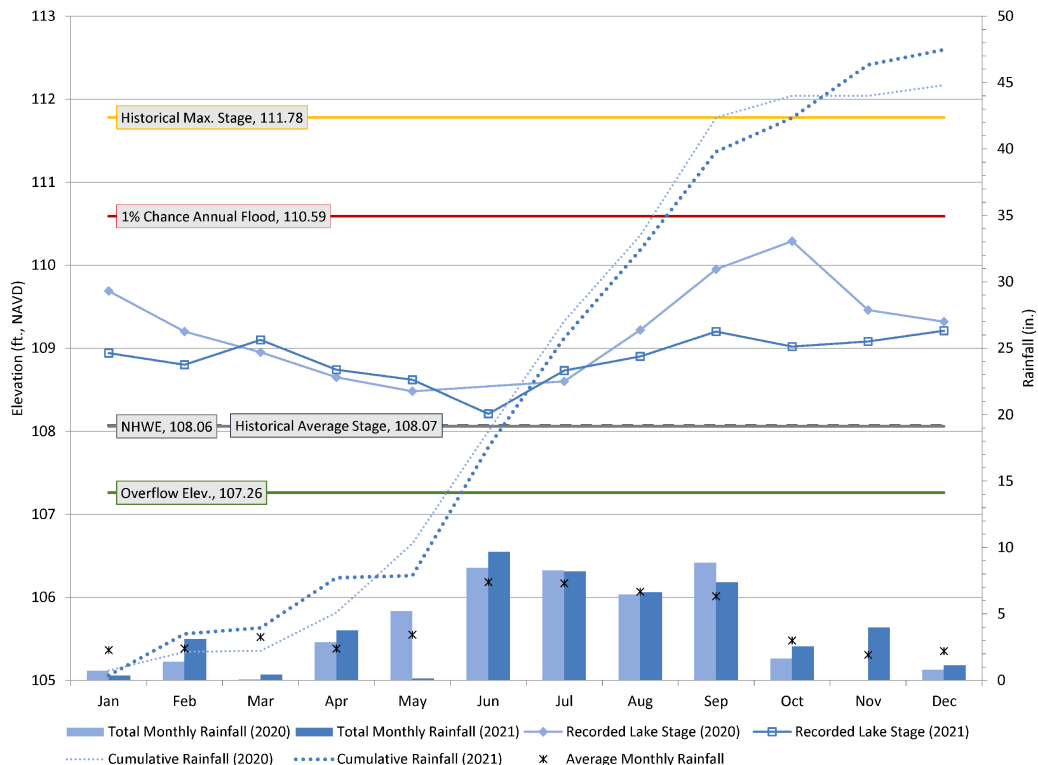
Lake Roberts



Historical Lake Levels



Monthly Data



Lake Informational Sheet

Lake Roberts



General Notes:

1. Inclusion of lakes in the Lake Informational Sheets does not imply ownership by Orange County.
2. All elevations are referenced to the North American Vertical Datum of 1988 (NAVD 88) unless otherwise noted.
3. Local datum conversion factors represent conversion from NGVD 29 to NAVD 88. Local conversion factors are County-established and are based on conversion factors for local County benchmarks, as recorded by Orange County Survey Department. Where benchmark conversions are not available, datum conversion factors were obtained from NOAA VertCon or USACE Corpscon based on the centroid of each lake. Note that the Local Datum Conversion Factor may differ from that used in FEMA FIS Reports and FIRM Maps.
4. Lake Location Data is based on the centroid of the subject lake.
5. "Contributing Area" is based on existing drainage basin delineations from major drainage basin master stormwater models and small area studies provided by the County.
6. "Surface Area at NHWE" was determined using Orange County terrain data where available. Where "N/A" is indicated, terrain data was not available at the NHWE or appeared suspect.
7. "Receiving Water Body" and "Flowpath" are estimated based on available lake outfall, aerial, and terrain data.
8. "Lake Index ID" is the ID associated with the County's Lake Index feature class (Feature class field: LINKFIELD).
9. "EPD ID" designates nomenclature used by the Orange County Environmental Protection Division.
10. "Major Basin Model Node" refers to the Node ID of the associated lake in the watershed master plan stormwater model.
11. Land Use designations were assigned by St. Johns River Water Management District (SJRWMD, 2014) and South Florida Water Management District (SFWMD, 2014-2016). The Landuse Distribution chart includes the lake feature in the water percentage shown.
12. When FEMA elevations were not provided (i.e. Zone X and Zone A), County or SJRWMD Established 1% Chance Flood Elevations were listed, if available. FEMA Datum Conversion is based off the September 24, 2021 Orange County FIS Report for the given watershed, and represent conversion from NGVD 29 to NAVD 88.
13. Floodplains shown are based on the FEMA National Flood Hazard Layer for Orange County, Florida, current as of August 31, 2022.
14. Flood zone designations and base flood elevations may be established or revised when new and more accurate information becomes available. Several factors influence the frequency with which flood maps may be updated, such as the extent of new development and the completion of flood-control projects.
15. Lake Outfall Data is based on existing information obtained from Orange County infrastructure databases, Southeastern Survey and Mapping Corp. (SSMC) survey data, model input data, and/or aerial and terrain data.
16. "Major Basin Model Link" refers to the Link ID of the associated outfall in the watershed master plan stormwater model.
17. Aerial images were obtained from FDOT (dates range from 2020-2021).

Notes Related to Lake Stage Graphs:

1. "Lake Stage Data Not Available" indicates that the lake stage is not monitored by Orange County.
2. Rainfall data is from Orange County Lake Sheen rainfall gage and supplemented with data from the NOAA rainfall gage at Orlando International Airport where necessary.
3. Average Monthly Rainfall is the historical average of the total monthly rainfall as recorded by the NOAA Orlando International Airport rainfall gage.
4. Lake stage data is from SFWMD and Orange County.
5. Average Annual Lake Stage is the average of periodically recorded stages within a given year.
6. High-Low bars indicate the maximum and minimum stage recorded within a given year.
7. Recorded Stages indicate the measured stage at a given time and may not represent the actual trend between measurements.
8. Historical Average Stage is based on the arithmetic average of past stage data provided by the County from the period of record for each lake. (1931 - 2022)
9. Historical Maximum Stage is the highest recorded stage within the lake, based on recorded lake stages provided by the County.
10. Historical Lake Levels graphs include stage and rainfall data through July 31, 2022, where available. Monthly data includes data from January 1, 2020 through December 31, 2021, where available.

Disclaimer: All data listed is provided "as is" without a warranty of any representation of accuracy, timeliness or completeness. The burden of determining accuracy, completeness, timeliness, and suitability for use rests solely on the User. The User acknowledges and accepts the limitation of the data and assumes the entire risk of using the data listed. There are no implied warranties of merchantability or fitness for a particular purpose.

The data provided herein is static and reflects current conditions at the time of publication. Furthermore, this data may not contain the level of detail required to perform design level engineering.

